

TENCENT HEADQUARTERS



Attachment: Fusiomesh with Clevis

Architect: NBBJ

Application: Safety and Security

Subsection: Enclosures

Location: Shenzhen, China

Market Segment: Corporate

The headquarters of this high-tech giant reinterprets the classic campus concept. For the cladding of the atrium, NBBJ selected 20,000 square feet of golden stainless steel GKD metal fabric. Key specification factors for the architects were the transparency and breathtaking aesthetic afforded by the material.



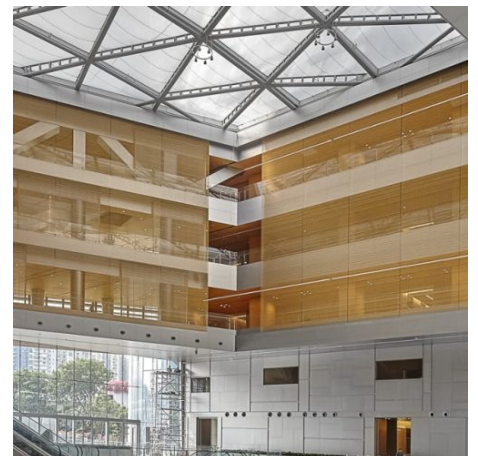
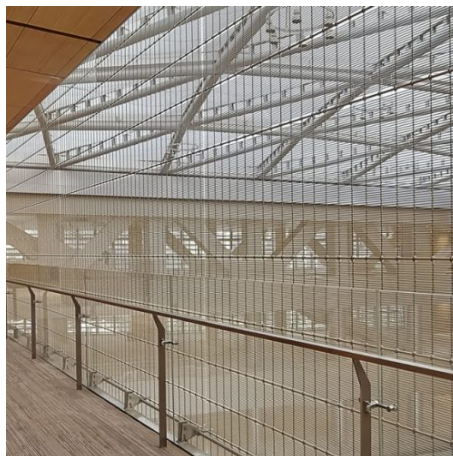
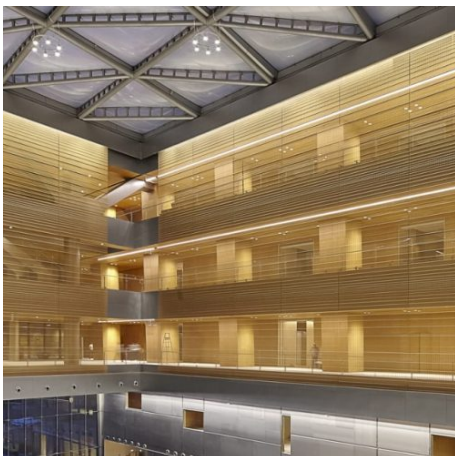
SUSTAINABILITY



DURABILITY



AESTHETIC



For Technical Consultation, contact our sales department:

Direct: **410.901.8428** or **410.901.8429** Email: metalfabrics@gkdusa.com