

Weaves: Escale 7×1

Attachment: Eyebolts

Architect: Dominique Perrault
Architecture

Application: Facades, Solar Control

Location: Lausanne, Switzerland

Market Segment: Municipal

When refurbishing this campus library, renowned French architect Dominique Perrault specified a black-coated spiral mesh for solar protection on the ground floor of the building. A total of 37 large, movable elements provide contrast to the colored glass panels above them.



SUSTAINABILITY



DURABILITY



AESTHETIC



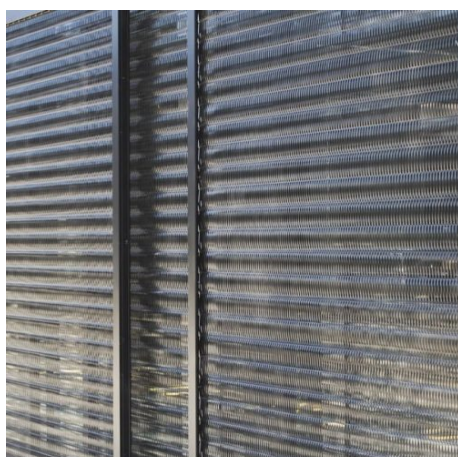
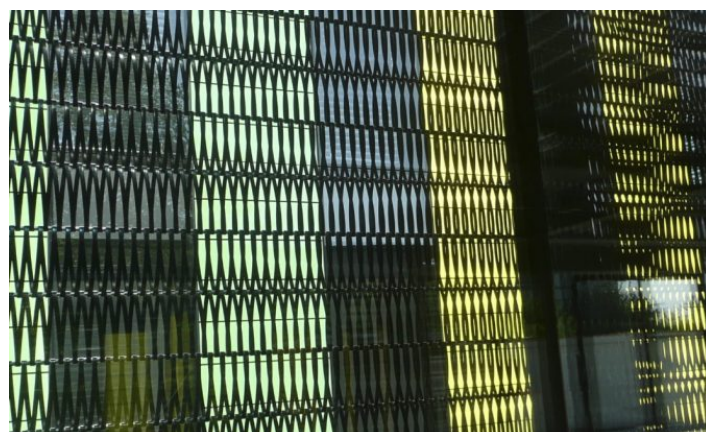
SUN SHADING



NATURAL LIGHTING



PROTECTION



For Technical Consultation, contact our sales department:

Direct: **410.901.8428** or **410.901.8429** Email: metalfabrics@gkdusa.com