

IDAHO COLLEGE OF OSTEOPATHIC MEDICINE (ICOM)



Weaves: Omega 1510

Attachment: Flats with Clevis

Architect: D/P/S Architects

Application: Communication, Solar Control

Subsection: Etched Graphics

Location: Boise, Idaho

Market Segment: Education

GKD helped identify Omega 1510 as the appropriate metal fabric to shade the sun-soaked west side of this new campus. Omega 1510 filters light and affords a necessary degree of transparency while also providing an opportunity to underscore the ICOM brand identity through custom etching.



SUSTAINABILITY



DURABILITY



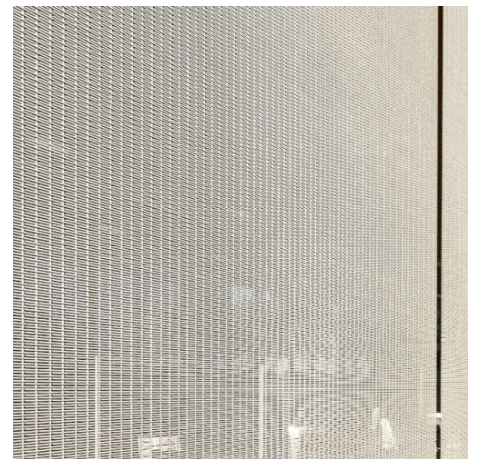
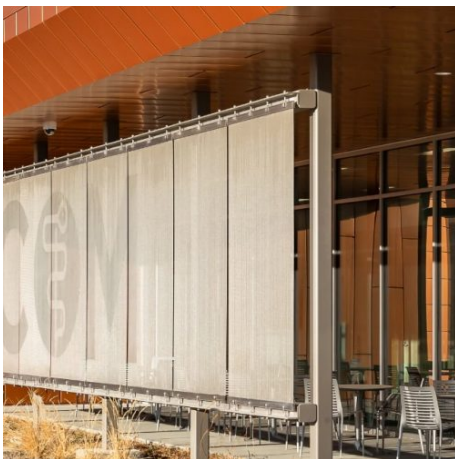
AESTHETIC



SUN SHADING



NATURAL LIGHTING



For Technical Consultation, contact our sales department:

Direct: **410.901.8428** or **410.901.8429** Email: metalfabrics@gkdusa.com